

CALCULUS BC
SECTION II, Part A
Time—30 minutes
Number of problems—2

A graphing calculator is required for these problems.

t (minutes)	0	4	9	15	20
$W(t)$ (degrees Fahrenheit)	55.0	57.1	61.8	67.9	71.0

1. The temperature of water in a tub at time t is modeled by a strictly increasing, twice-differentiable function W , where $W(t)$ is measured in degrees Fahrenheit and t is measured in minutes. At time $t = 0$, the temperature of the water is 55°F . The water is heated for 30 minutes, beginning at time $t = 0$. Values of $W(t)$ at selected times t for the first 20 minutes are given in the table above.
- (a) Use the data in the table to estimate $W'(12)$. Show the computations that lead to your answer. Using correct units, interpret the meaning of your answer in the context of this problem.
- (b) Use the data in the table to evaluate $\int_0^{20} W'(t) dt$. Using correct units, interpret the meaning of $\int_0^{20} W'(t) dt$ in the context of this problem.
- (c) For $0 \leq t \leq 20$, the average temperature of the water in the tub is $\frac{1}{20} \int_0^{20} W(t) dt$. Use a left Riemann sum with the four subintervals indicated by the data in the table to approximate $\frac{1}{20} \int_0^{20} W(t) dt$. Does this approximation overestimate or underestimate the average temperature of the water over these 20 minutes? Explain your reasoning.
- (d) For $20 \leq t \leq 25$, the function W that models the water temperature has first derivative given by $W'(t) = 0.4\sqrt{t} \cos(0.06t)$. Based on the model, what is the temperature of the water at time $t = 25$?

2. For $t \geq 0$, a particle is moving along a curve so that its position at time t is $(x(t), y(t))$. At time $t = 2$, the particle is at position $(1, 5)$. It is known that $\frac{dx}{dt} = \frac{\sqrt{t+2}}{e^t}$ and $\frac{dy}{dt} = \sin^2 t$.

(a) Is the horizontal movement of the particle to the left or to the right at time $t = 2$? Explain your answer. Find the slope of the path of the particle at time $t = 2$.

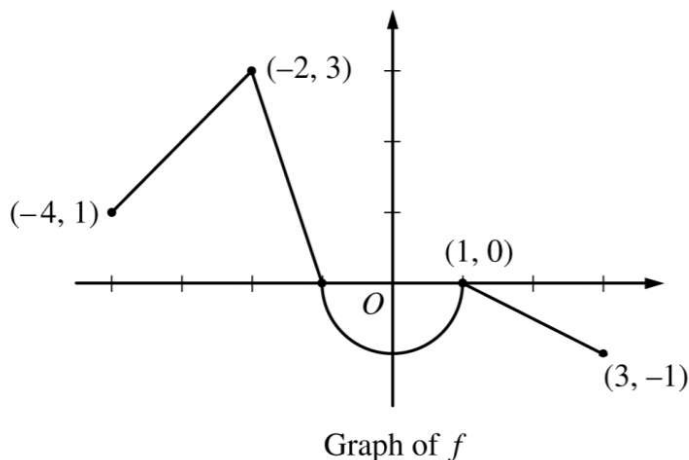
(b) Find the x -coordinate of the particle's position at time $t = 4$.

(c) Find the speed of the particle at time $t = 4$. Find the acceleration vector of the particle at time $t = 4$.

(d) Find the distance traveled by the particle from time $t = 2$ to $t = 4$.

CALCULUS BC
SECTION II, Part B
Time—60 minutes
Number of problems—4

No calculator is allowed for these problems.



3. Let f be the continuous function defined on $[-4, 3]$ whose graph, consisting of three line segments and a semicircle centered at the origin, is given above. Let g be the function given by $g(x) = \int_1^x f(t) dt$.
- Find the values of $g(2)$ and $g(-2)$.
 - For each of $g'(-3)$ and $g''(-3)$, find the value or state that it does not exist.
 - Find the x -coordinate of each point at which the graph of g has a horizontal tangent line. For each of these points, determine whether g has a relative minimum, relative maximum, or neither a minimum nor a maximum at the point. Justify your answers.
 - For $-4 < x < 3$, find all values of x for which the graph of g has a point of inflection. Explain your reasoning.

x	1	1.1	1.2	1.3	1.4
$f'(x)$	8	10	12	13	14.5

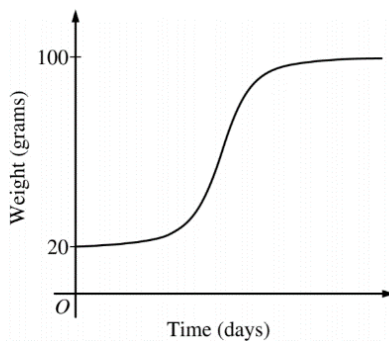
4. The function f is twice differentiable for $x > 0$ with $f(1) = 15$ and $f''(1) = 20$. Values of f' , the derivative of f , are given for selected values of x in the table above.
- (a) Write an equation for the line tangent to the graph of f at $x = 1$. Use this line to approximate $f(1.4)$.
- (b) Use a midpoint Riemann sum with two subintervals of equal length and values from the table to approximate $\int_1^{1.4} f'(x) dx$. Use the approximation for $\int_1^{1.4} f'(x) dx$ to estimate the value of $f(1.4)$. Show the computations that lead to your answer.
- (c) Use Euler's method, starting at $x = 1$ with two steps of equal size, to approximate $f(1.4)$. Show the computations that lead to your answer.
- (d) Write the second-degree Taylor polynomial for f about $x = 1$. Use the Taylor polynomial to approximate $f(1.4)$.

5. The rate at which a baby bird gains weight is proportional to the difference between its adult weight and its current weight. At time $t = 0$, when the bird is first weighed, its weight is 20 grams. If $B(t)$ is the weight of the bird, in grams, at time t days after it is first weighed, then

$$\frac{dB}{dt} = \frac{1}{5}(100 - B).$$

Let $y = B(t)$ be the solution to the differential equation above with initial condition $B(0) = 20$.

- (a) Is the bird gaining weight faster when it weighs 40 grams or when it weighs 70 grams? Explain your reasoning.
- (b) Find $\frac{d^2B}{dt^2}$ in terms of B . Use $\frac{d^2B}{dt^2}$ to explain why the graph of B cannot resemble the following graph.



- (c) Use separation of variables to find $y = B(t)$, the particular solution to the differential equation with initial condition $B(0) = 20$.

6. The function g has derivatives of all orders, and the Maclaurin series for g is

$$\sum_{n=0}^{\infty} (-1)^n \frac{x^{2n+1}}{2n+3} = \frac{x}{3} - \frac{x^3}{5} + \frac{x^5}{7} - \dots$$

- (a) Using the ratio test, determine the interval of convergence of the Maclaurin series for g .
- (b) The Maclaurin series for g evaluated at $x = \frac{1}{2}$ is an alternating series whose terms decrease in absolute value to 0. The approximation for $g\left(\frac{1}{2}\right)$ using the first two nonzero terms of this series is $\frac{17}{120}$. Show that this approximation differs from $g\left(\frac{1}{2}\right)$ by less than $\frac{1}{200}$.
- (c) Write the first three nonzero terms and the general term of the Maclaurin series for $g'(x)$.