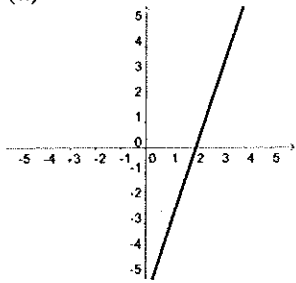


**Check Your Understanding**  
**Graphing: Graphing an Equation Using a T-Chart**

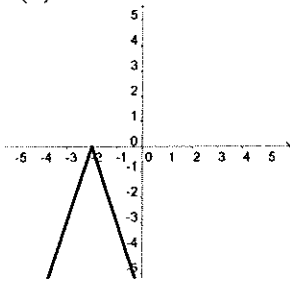
Answer these problems, then check your answers using the key on the next page.

#1) Which is the graph of  $y = -3|x - 2|$

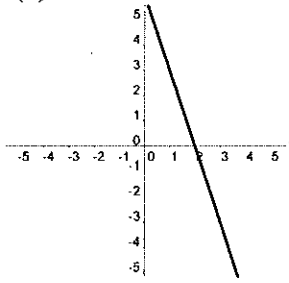
(a)



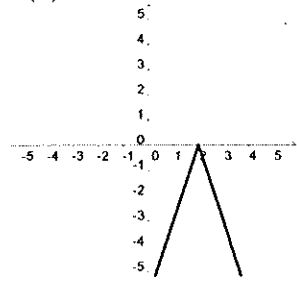
(b)



(c)



(d)



#2) Complete the table:

$x$	$y = -4x + 3$
-5	
	11
	-13
10	
	-53

Answers:

#1) d

#2)

$x$	$y = -4x + 3$
-5	23
-2	11
4	-13
10	-37
14	-53